

HUCKLEBERRY BOTANIC REGIONAL PRESERVE – HP004 FUELS MANAGEMENT PRESCRIPTION

SITE DESCRIPTION AND LOCATION:

This site consists of 1.6 acres of Oak-bay woodland forest, Coastal scrub (mesic), and is a potential site for Pallid manzanita. The RTA is bordered on the northwest side by the Hills Tennis Club. The terrain is steep and access is limited to a foot trail near the intersection of Skyline, Pinehurst and Shepherd Canyon Road.

VEGETATION MANAGEMENT GOALS:

Oak-bay woodland, pallid manzanita, scattered northern coastal scrub.

FUELS MANAGEMENT OBJECTIVES:

1. Improve fire protection capability adjacent to neighborhood.
2. Reduce fuel volume and potential for flame lengths of greater than 8 feet.
3. Reduce ladder fuels and the potential for crown fires and ember dissemination.

RESOURCE OBJECTIVES AND CONSIDERATIONS:

- Conduct all initial treatment during the period from July 31st to Jan. 31st to avoid disturbance to nesting raptors and song birds, as recommended by the District's Stewardship staff. If work is proposed during nesting season, Stewardship will conduct a pre-work nesting survey within 15-days of performance of work and flag a reasonable buffer around identified nest sites. Some areas within the RTA may have prohibited entry until after nesting season based on the results of the Stewardship surveys.
- Conduct surveys in oak and bay habitat to identify and avoid Dusky-Footed Woodrat nests. Any nest identified will be protected by a reasonable buffer described in the protocol developed by Stewardship.
- Install erosion control measures if needed in areas where vegetation has been removed or disturbed to protect water courses (streams, drainages, springs, wetlands) and to prevent sloughing of slopes during rainfall events.

FUELS TREATMENT PRESCRIPTION:

Initial Treatment

This RTA holds potential habitat for Pallid Manzanita and though no plants have been located, any found will be treated according to the District's current Pallid Manzanita Management Plan.

With the exception of selected oaks and bays retained for recruitment, all oaks/bays less than 6 dbh will be removed to increase spacing and health of forested area.

All retained trees will be limbed up to 8 feet from the forest floor to reduce total fuel volume. Reduce non-manzanita shrub volume and dead material according to performance standards for (mesic) Coastal Scrub by cutting brush and removing off-site, or placing in piles for burning. Herbaceous, native plants will remain. Work includes:

- Removal of broom, coyote brush and other invasives that create a fuels issue.
- Herbicide applications during initial treatment and as necessary during annual maintenance to treat re-sprouts.
- Material may be piled and burned or hauled off-site.

Follow-up/Maintenance (Note: if initial treatment is spread over more than one year, adjust the maintenance schedule as needed to accommodate.)

YEAR	FUELS TREATMENT
01	Initial Treatment.
02-04	Use weed eating/mowing/herbicides to maintain grass and low shrub fuel loads.
05	Repeat initial treatment as needed. Use weed eating/mowing/herbicides to maintain grass and low shrub fuel loads.
06-09	Use weed eating/mowing/grazing/herbicides to maintain grass and low shrub fuel loads.
10	Repeat initial treatment as needed. Use weed eating/mowing/herbicides to maintain grass and low shrub fuel loads.
11-14	Use weed eating/mowing /herbicides to maintain grass and low shrub fuel loads.
15	Repeat initial treatment as needed. Use weed eating/mowing/herbicides to maintain grass and low shrub fuel loads.
16-19	Use weed eating/mowing /herbicides to maintain grass and low shrub fuel loads.
20	Repeat initial treatment as needed. Use weed eating/mowing/herbicides to maintain grass and low shrub fuel loads.
21-24	Use weed eating/mowing /herbicides to maintain grass and low shrub fuel loads.
25	Repeat initial treatment as needed. Use weed eating/mowing/herbicides to maintain grass and low shrub fuel loads.
26-29	Use weed eating/mowing/herbicides to maintain grass and low shrub fuel loads.
30	Repeat initial treatment as needed. Use weed eating/mowing/herbicides to maintain grass and low shrub fuel loads.

MONITORING:

Staff from the District's Fire Department, Planning/Stewardship, and Operations will evaluate the success and efficacy of the initial and follow-up fuels treatments. Monitoring results will be documented.

PRESCRIPTION PREPARED BY:

Aileen Theile
Fire Captain, EBRPD



Signature


8/27/2012
Date

REVIEW AND APPROVAL:

This prescription meets the District's standards for fuels management, natural resource protection and achievement of Best Management Practices according to the Wildfire Hazard Reduction and Resource Management Plan and is consistent with the mitigation measures contained in the EIR:

John R. Swanson
Fire Chief, EBRPD


08.28.2012

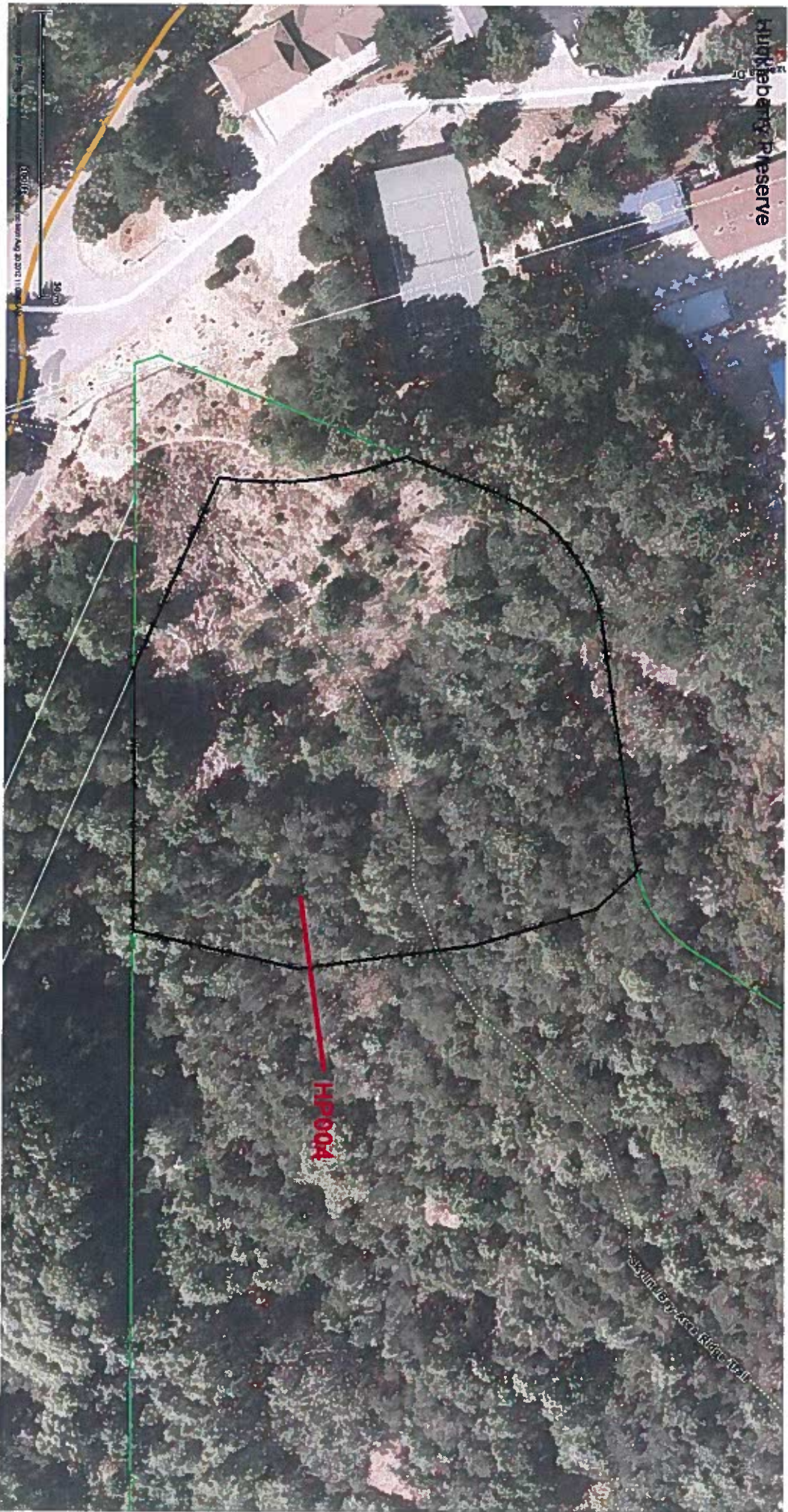

Signature

08.29.2012
Date

NEAL FUJITA
Stewardship Manager, EBRPD


Signature

8/29/12
Date



Hindleyberry Preserve

HP004

Scale bar and other small text at the top left.